



Excellent adhesion to standard substrates, good adaptation to the contours of component junctions thanks to high modellability: the blaugelb Foil Vario **SL²⁰⁵⁰** Double-Sided.





blaugelb Foil Vario **SL²⁰⁵⁰** Double-Sided

Reliable protection for connecting joints.

Product features:

The blaugelb Foil Vario **SL²⁰⁵⁰** Double-Sided forms a layer that is airtight, impervious to driving rain and windproof across the connection and expansion joints between windows and doors and the adjacent wall materials, depending on the application.

Its main purpose is for use on the inside of windows and doors, but it can also be used on the outside. Thanks to its cross-bonding, the Z-configuration, as described in the LzM, is exceptionally well suited. Thanks to its performance characteristics, it can be used in a wide range of situations in both renovation and new-build projects (see drawing icons). Installing it as a second layer of waterproofing beneath the window sill is another possible application.

The strong adhesive properties of the self-adhesive backing help to ensure an

Continued on
the next page ►

- Exceptional adhesion to standard wall building materials and framing materials
- Immediate coverage, even in the event of overlapping
- High tear resistance, yet easy to shape for forming corners and transitions
- Watertightness against driving rain up to $\geq 2,050$ Pa (EN 12208)
- UV-resistant for 12 months
- Waterproof up to 10,000 Pa



airtight seal, thereby maintaining the indoor climate and preventing warm, humid indoor air from entering the joint and causing condensation.

The blaugelb Foil Vario **SL²⁰⁵⁰ Double-Sided** has one side with full-surface adhesive and a self-adhesive strip on the non-woven side for fixing, e.g. to the window frame. Thanks to its single-sided and double-sided adhesive backing, it can be attached both indoors and outdoors.

Handy finger tab for efficient handling, including self-adhesive strips on both sides



Product benefits:

- Waterproofing that is airtight, impervious to driving rain, windproof and open to vapour diffusion for inside and outside waterproofing layers in accordance with DIN 18355
- Water vapour diffusion permeability (from the adhesive side) is diffusion-open, $sd \leq 0.5$ m (in accordance with DIN 4108-3)
- Water vapour diffusion permeability (from the fleece side) is diffusion-resistant, $sd \geq 10$ m (in accordance with DIN 4108-3)
- The adhesive strength ensures exceptional adhesion

- immediate adhesion, even where layers overlap
- Adhesive over the entire surface on one side (adhesive side), 20 mm adhesive (non-woven side) for double-sided use
- High tear resistance, yet easy to shape for forming corners and transitions
- Can be plastered over, covered with adhesive tape and painted over
- Concealed installation within the structure, e.g. beneath mouldings or pilaster strips
- UV-resistant for 12 months
- Watertight against driving rain over 2,050 Pa
- Flexible and elastic, compensates for joint movements
- Moisture and temperature-resistant
- Easy to apply thanks to overlapping, perforated backing paper (finger lift)
- Joint sealing compliant with the RAL "Leitfaden zur fachgerechten Montage" [Guideline for Proper Installation] and the German Building Energy Law (GEG)
- Tested to be very low in emissions according to EMICODE EC1 Plus

Technical data:

Material:	Non-woven-backed plastic polymer foil, double-sided adhesive
Building material class: DIN EN 13501	Class E
Self-adhesive:	Yes
Water vapour diffusion permeability: (from the adhesive side) DIN EN ISO 12572	Breathable, $sd \leq 0.5$ m
Water vapour diffusion permeability: (from the flow side) DIN EN ISO 12572	Diffusion-resistant, $sd \geq 10$ m
Joint permeability coefficient: DIN EN 12114	$a < 0.1 \text{ m}^3/[\text{h} \cdot \text{m}^2 \cdot (\text{daPa})^{2/3}]$, airtight in accordance with RAL-LzM requirements
Watertightness against driving rain: DIN EN 1027	$\geq 2,050$ Pa
Watertightness:	$\geq 10,000$ Pa
UV stability:	12 months
Temperature resistance:	From approx. -40 °C to $+90$ °C
Ambient temperature during handling:	-10 °C to $+45$ °C
Substrate temperature during application:	From -10 °C (ice-free)
Compatibility with adjacent building materials:	Satisfied
Storage temperature:	At $+0$ °C to $+30$ °C
Shelf life:	18 months with dry storage in unopened original packaging
Colour:	White

Item name	PU	Item no.
blaugelb Foil Vario SL²⁰⁵⁰ Double-Sided 75 mm single perforation	8 x 30 m	9384669
blaugelb Foil Vario SL²⁰⁵⁰ Double-Sided 90 mm single perforation	6 x 30 m	9384670
blaugelb Foil Vario SL²⁰⁵⁰ Double-Sided 120 mm double perforation	4 x 30 m	9384672
blaugelb Foil Vario SL²⁰⁵⁰ Double-Sided 150 mm double perforation	4 x 30 m	9384673
blaugelb Foil Vario SL²⁰⁵⁰ Double-Sided 200 mm double perforation	2 x 30 m	9384674
blaugelb Foil Vario SL²⁰⁵⁰ Double-Sided 250 mm double perforation	2 x 30 m	9384675



Preparation and processing:

The blaugelb Foil Vario **SL²⁰⁵⁰ Double-Sided** must be at the storage temperature specified below during handling. Under these conditions, the blaugelb Foil Vario **SL²⁰⁵⁰ Double-Sided** can be installed at ambient temperatures of -10 °C or above. The surface must be solid, dry, clean and free of grease, separating agents, solvents, dust, ice, white frost and loose parts. The substrate and window profiles must be free of moisture/condensate.

Before application, the suitability of the material for the intended application is to be verified through appropriate tests performed by the customer. On porous, sandy or damp substrates, adhesion can be improved by pre-treating the surface with a suitable primer (blaugelb Spray Primer, item no. 9066539).

The blaugelb Foil Vario **SL²⁰⁵⁰ Double-Sided** is designed for single-sided use. The self-adhesive has an outstanding adhesion on commercially available window profiles and the standard construction substrates. The foil is flexible and stretchy. Pressing the foil down during installation is crucial for activating its self-adhesive properties. It ensures a very high level of long-lasting adhesion to the substrate, even when working overhead.

Unwind the blaugelb Foil Vario **SL²⁰⁵⁰ Double-Sided** from the roll and cut it to the required length, adding approx. 5 cm. Remove the perforated protective paper on the fully adhesive side and bond the foil to the frame. The blaugelb Foil Vario **SL²⁰⁵⁰ Double-Sided** should be pressed firmly onto the window frame.

Completely fill the centre functional level with the intended insulation material. Then bond the blaugelb Foil Vario **SL²⁰⁵⁰ Double-Sided** to the substrate without stretching with the self-adhesive strip, forming a sufficient expansion loop. [Note on the movement loop as an installation requirement: see DIN 4108-T7 / RAL Installation Guide 2024-03]. In the corners of the soffit,

This figure shows the effect of the non-woven and self-adhesive sides:
The non-woven side is diffusion-resistance (sd value ≥ 10 m), water-impermeable ($\geq 10,000$ Pa) and UV-resistant.
The self-adhesive side is open to vapour diffusion.

the membrane should be installed in a trough-like shape with an overlap of approx. 30–50 mm (taking into account the widths of the joints to be sealed). The “corner bowl formation” thus achieved is to be recommended. The recommendations from the technical bulletin “Verputzen von Fensteranschlussfolien”: 2016-08 (Plastering of Window Connection Foils) should be observed for the bonding width in the jamb area. The blaugelb Foil Vario **SL²⁰⁵⁰ Double-Sided** should be pressed firmly onto the substrate. The blaugelb Pressure Roller (item no. 9074068) is suitable for pressing on to the window frame and the substrate.

Note on correct installation:

Make sure to prevent any leaks through open areas. The convection that occurs there carries far more moisture into the structure than can escape through planned diffusion.

Delivery and storage form:

Store in the original packaging in a dry place and protect against effects of frost and heat. Can be stored for 18 months at a storage temperature between +0 °C and +30 °C.

Disposal:

Scraps of the blaugelb Foil Vario **SL²⁰⁵⁰ Double-Sided** can be disposed of in the household waste. The disposal generally conforms with the national and local specifications.

Safety note:

According to the available specifications and guidelines, the product is not a hazardous substance.

Requirements:

GEG 2024; DIN 4108-7; DIN EN 12207;
DIN 18355; DIN 18360

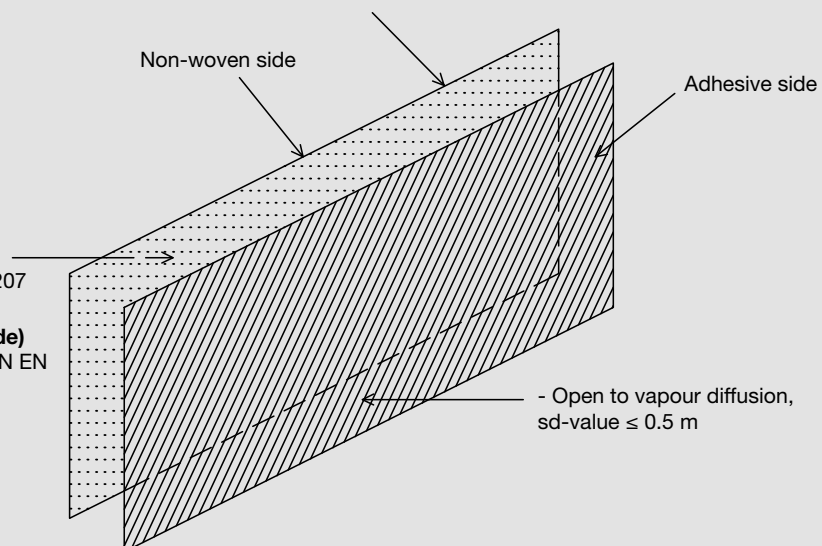
- Resistant to vapour diffusion, sd value ≥ 10 m
- Water impermeability $\geq 10,000$ Pa
- UV resistance: 12 months

Airtightness zone (room side)

- Airtightness in accordance with DIN EN 12207

Weather-protection zone (weather side)

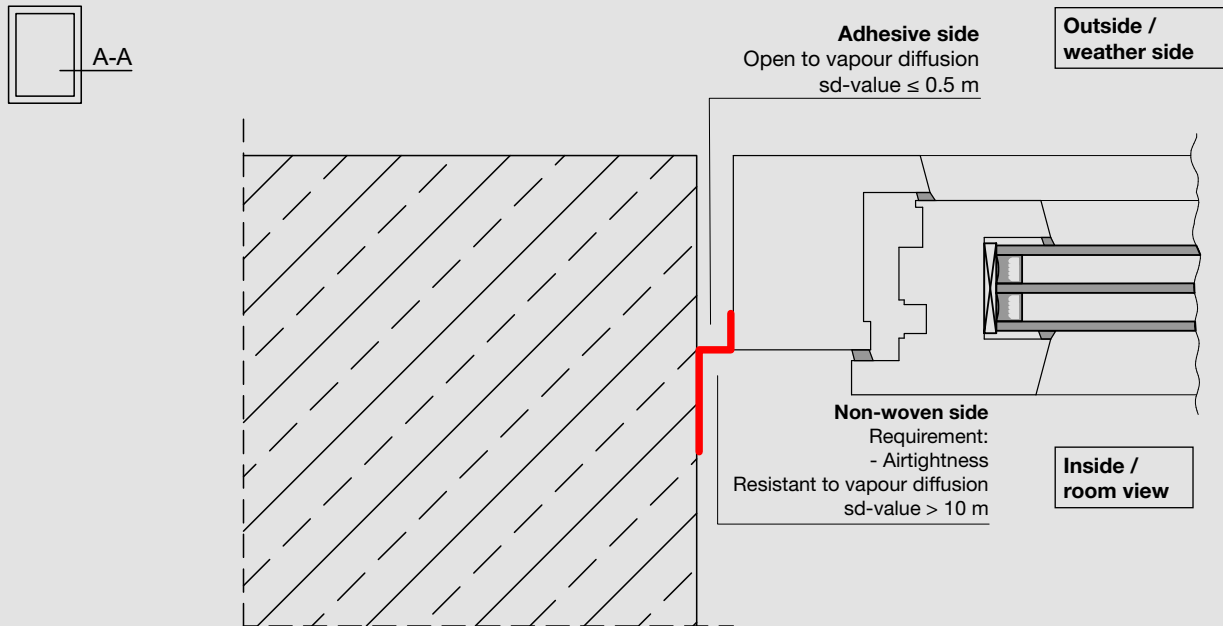
- Watertightness against driving rain: DIN EN 12208
- Wind resistance



- Open to vapour diffusion, sd-value ≤ 0.5 m



The self-adhesive side should face the wall, whilst the backing should face the joint.
Thanks to the double-sided adhesive backing, it can also be stuck to the fleece.



The drawings merely illustrate the intended use of the foil. Other sealing layers are not taken into account.

